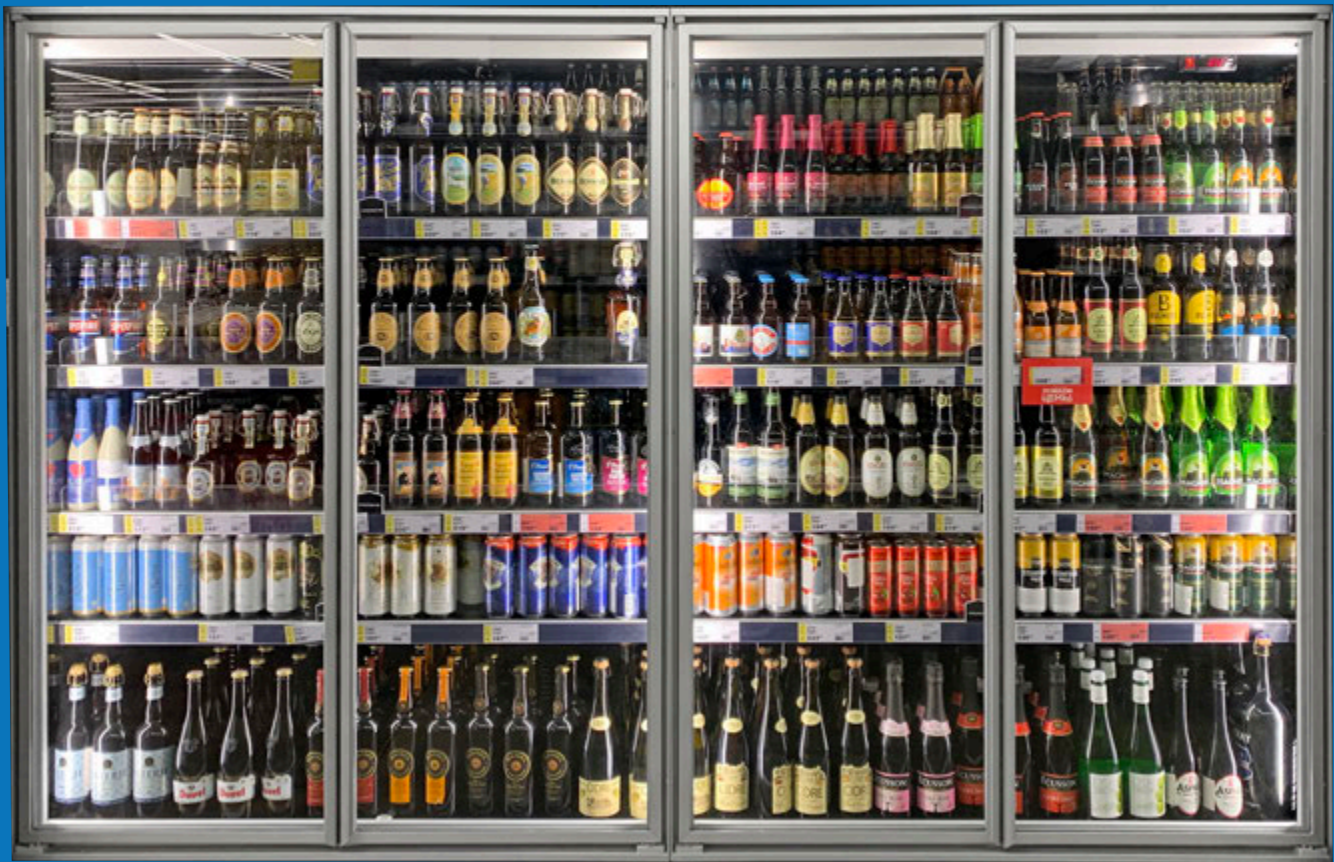


W54 MIDI

HINGED GLASS DOOR SYSTEMS FOR REFRIGERATED CABINET



Rubber between doors to have maximum energy saving



600.000 Cycle tested torsion bar hinge system











5 years life time magnetic TPE gasket

SYSTEM FEATURES

Robust and longlife appearance and sustainable values such as durability, low energy consumption and low maintenance operation are important factors, particularly in the case of refrigerated cabinets.

For this reason, we have developed a special procedure for manufacturing an insulating glass that enables to reach its full potential in terms of stress resistance, scratch resistance, impact toughness and general durability.

- Saves up to 60% energy in refrigerated cabinets
- Simple retrofit & OEM adaption on multidecks
- Vertical LED lighting is included
- Easy installation and maintenance
- Self closing system by gravity hinge (600.000 cycle warranty) Optional Gravity and Hydraulic hinge systems
- Rubbers between doors that keep cold air inside to have maximum energy saving
- Manuel door stop function at 90°

TECHNICAL DETAILS		
	Module Length	937 - 1250 - 1562 - 1875 - 2343 2500 - 2812 - 3124 - 3750
	Module Height	1000-1900
	Glass Combination	Double Glass 16mm (4mm Tempered float glass + 8mm Air gap with argon+ 4mm Tempered low-e glass) Ug value 1.3*
	Lighting	LED - LED TUBE - T5 - T8
	Climate Class	25°C/60% Relative humidity /0°C to +4°C (3)
	Handle Options	Full integrated handle / Short Metal Handle
	Closing System	Self-closing Torsion bar (Optional : Gravity Hinge, Hydraulic hinge)
	Colour	Matt Gray Eloxal & Matt Black Eloxal Any RAL code up to Project

* The lower the ug value, the higher energy saving rate.

