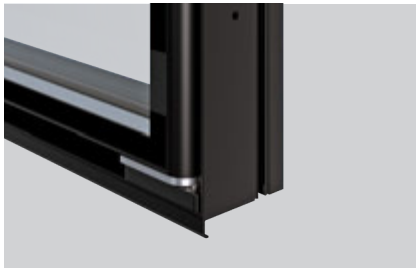


G36 FULL GLASS POSITIVE

HINGED GLASS DOOR SYSTEMS FOR COLD ROOM & CABINET



Screen printing on glass in any ral code
/ Edge protection



1 million Cycle tested torsion bar hinge
system



Esthetic metal handle

SYSTEM FEATURES

One of the key components for the growth of a business is design – a certain game changer in competitive markets. Our full glass design, research and development center focuses on generating cutting edge technologies that will provide key advantages over the next decades. G36 Full Glass Positive series is offering maximum visibility in cold room projects.

Our design focus on look, function and usability while acknowledging rationalization based on ongoing market, product and user based research.

- Thermal insulating barrier in the middle of frame that enable %20 less energy consumption
- Suitable for positive cabinets and cold room
- Self closing by means of torsion bar system
- Frameless door structure that enable better visibility

TECHNICAL DETAILS		
	Module Length	797 - 1562 - 2343 - 3124 - 3905
	Module Height	1000-1900
	Glass Combination	Double Glass 28mm (4mm Tempered float glass + 20mm Air gap with argon+ 4mm Tempered low-e glass)
	Lighting	LED - LED TUBE - T5 - T8
	Climate Class	25°C/60% Relative humidity /-1°C to +4°C 3M1
	Handle Options	Plastic Handle / Metal Handle
	Closing System	Self-closing
	Colour	Matt Gray Eloxal & Matt Black Eloxal

* The lower the ug value, the higher energy saving rate.

